

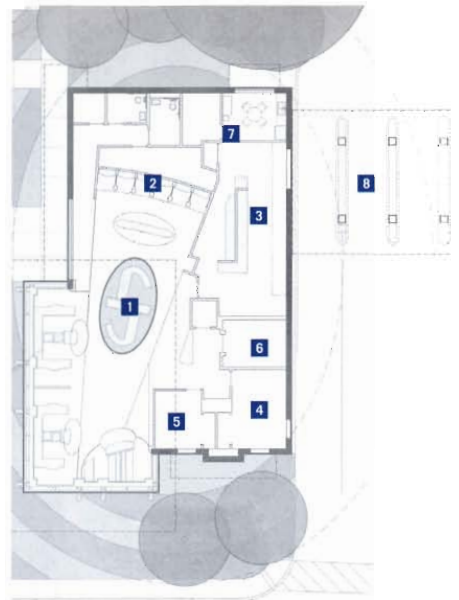
PROJECT University Federal Credit Union—Brodie Lane Branch, Austin
CLIENT University Federal Credit Union
ARCHITECT Antenora Architects
CONTRACTOR Marcon Construction
CONSULTANTS Architectural Engineers Collaborative (structural)
PHOTOGRAPHER Paul Bardagjy

University Federal Credit Union's new Brodie Lane branch in Austin illustrates the institution's rethinking of its marketing strategy. According to the architect, the goal was to design a visually striking landmark that would reflect the advances in technology within the banking world while not alienating UFCU's long-standing, less digital-savvy members. Borrowing from Le Corbusier, the result is a "machine for banking" that invites customers to enter a largely transparent, sunlight-infused lobby space that departs dramatically from the conventional notion of a dark-paneled bank interior. Shaped like an upside-down, three-dimensional trapezoid enclosed on three sides by high-efficiency glass, the lobby is finished with maple surfaces – including furniture, casework, and ceiling – and accents of brushed stainless steel. Elliptical shapes are integrated into the plan, carpet patterns, and landscaping to facilitate circulation. The glazing is divided into three horizontal zones: the lowest with slightly tinted glass that allows a view of customer activities within; the middle zone with glass more darkly

tinted to de-emphasize mechanical and lighting systems while maximizing solar control; and the highest zone with clear glass to optimize outside views of lobby signage. The three zones are delineated by horizontal awnings that wrap the lobby to minimize sunlight and provide platforms for window-washers.

JENNIFER LEE

RESOURCES STONE MASONRY VENEER: Lueders Limestone, LP; METAL FRAMING: Uni-strut; STEEL DECK: Epic Metals Corp.; STEEL BAR GRATE: Construction Metal Products; CUSTOM WOODWORK: Progressive Millwork; WATERPROOFING AND DAMPPROOFING: Tamko; ENERGYGUARD AND PERMALITE INSULATION: GAF Materials Corp.; ROOF AND WALL PANELS: Mapes Architectural Products; BITUMINOUS SHEET ROOFING: GAF Materials Corp.; METAL ROOFING: MBCI; WOOD DOORS: Eggers Industries; FLOAT GLASS AND HEAT-TREATED GLASS: PPG Industries; GLAZED CURTAINWALL: Vistawall; WALL TILE AND UNGLAZED CERAMIC TILE: Daltile; ACOUSTICAL CEILINGS: Armstrong World Industries; PAINTS: Hammerite; VINYL COMPOSITE TILE: Armstrong World Industries; LINOLEUM FLOOR COVERINGS: Forbo Industries; CARPET FLOORING: Shaw Contract; PAINT: Sherwin-Williams, ICI Dulux; SIGNAGE AND GRAPHICS: Concepts Unlimited; BIRD CONTROL SYSTEM: Bird-B-Gone, Inc.; BULLET-RESISTANT GLASS: Diebold; STOREFRONT: Vistawall; SUNSHADE WALKWAY: Construction Metal Products



GROUND FLOOR PLAN
 1 CONCIERGE DESK
 2 VIDEO TELLERS
 3 TELLER ROOM
 4 INVESTMENT OFFICE/CONFERENCE
 5 MANAGER OFFICE
 6 SAFE DEPOSIT VAULT
 7 BREAK ROOM
 8 DRIVE THROUGH LANES